



PORSCHE CAYENNE

When speed, sharp steering, and ultimate handling are required, our Porsche Cayenne Turbo safely puts the power down from idle to 60mph in 4 seconds. The Cayenne twin-turbo V8 delivers 520hp and 516 lb-ft of torque on double-wishbone front suspension that can carve through corners like a knife and make you forget that it is an SUV loaded with our U-CRANE. Designed to provide a superior level of performance, precision, speed, and comfort our Porsche Cayenne Turbo fleet has proven that it is the most reliable workhorse in the industry.

SPECIFICATIONS

Drivetrain	All Wheel Drive 4x4
Engine Block	4.5L V8 - 520hp
Capacity	5 Passengers + Driver
Color	Matte Black non-reflective
Vehicle Length	16' 8"
Vehicle Width	7' 3"
Vehicle Height	6' 9"
Wheel Width	11' 24"
Ground Clearance	8"
Height Clearance	10' 7" (with U-CRANE 6)
Max Speed	150 MPH

USED FOR

City Streets / Highways
Racetracks
Light Off-Road
Sand / Beach
Snow / Ice

FEATURES

5 Built-in SmallHD Monitors
PIX 240i HD Recorder
Hands Free Open Mic Comms
XLR 4-pin 12V Power Outlets
XLR 3-pin 24V Power Outlets
Ethernet Loop Through
P-Tap 12V Power Outlets
USB 5V Power Outlets
Multiple HDSDI Outputs
TX Rigging Point + Signal
Multiple Rigging Mounts

filmotechnic

ARM LENGTH [TURRET TO NOSE]**4.3m / 14ft****5.5m / 18ft****6.5m / 21ft****7.6m / 25ft**

VEHICLE CLEARANCE WITH ARM

3.2m / 10' 4"

3.26m / 10' 7"

3.26m / 10' 7"

3.26m / 10' 7"

MAX PAYLOAD WEIGHT (HEAD & CAMERA)

120kg / 265lbs

110kg / 242lbs

100kg / 220lbs

80kg / 176lbs

MAXIMUM LENS HEIGHT

ARM OFF THE FRONT OF THE VEHICLE

3.5m / 11' 5"

4.1m / 13' 45"

4.5m / 14' 76"

5.1m / 16' 73"

ARM OFF THE BACK OF THE VEHICLE

4.11m / 13' 5"

4.8m / 15' 74"

5.6m / 18' 37"

6.2m / 20' 34"

ARM OFF THE SIDE OF THE VEHICLE

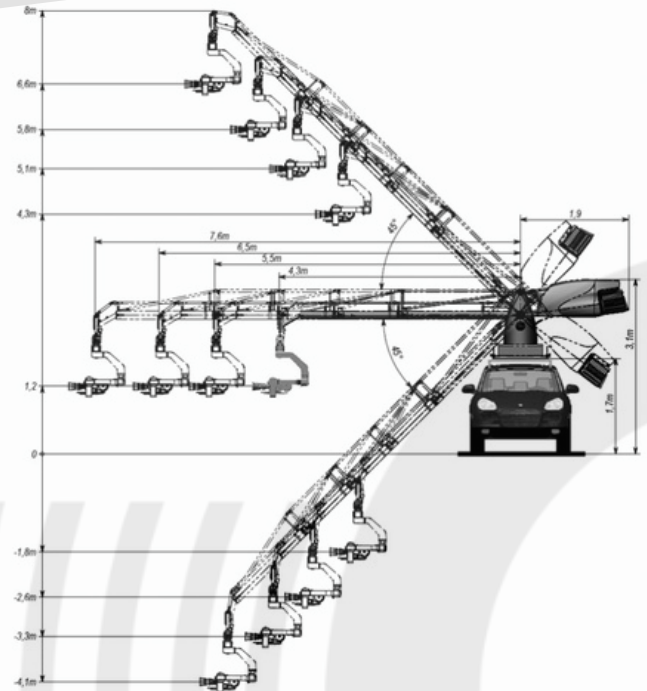
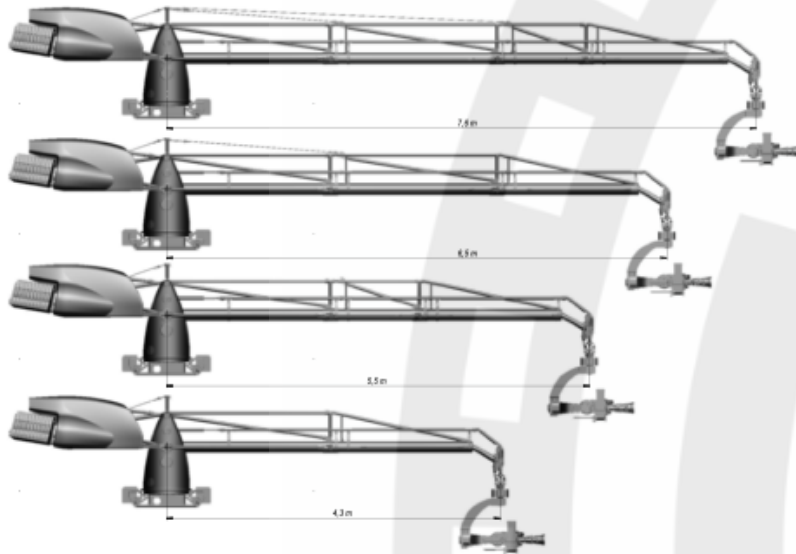
4.3m / 14' 10"

5.4m / 17' 71"

6.2m / 20' 34"

6.8m / 22' 31"

*DROP FROM FH MOUNT TO TILT AXIS CENTER 70cm / 28"

**filmotechnic**

ATLANTA | ALBUQUERQUE | DALLAS | DETROIT | LOS ANGELES | NEW YORK | ORLANDO

+1 310 418 3311 | BOOKING@FILMOUSA.COM | WWW.FILMOTECHNIC.LA